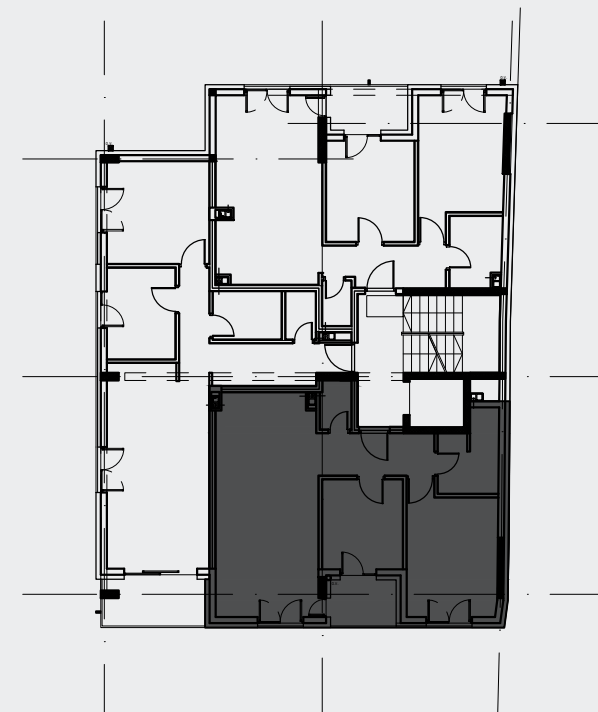


Osnova stana R=1:50



STANOVI S2, S5, S8 i S11 P=58.78m²
dvoiposoban, južna orijentacija
 I sprat S2, II sprat S5, III sprat S8 i IV sprat S11

oz.	namena	P(m ²)	O(m')	podna obloga
1	ulaz	5.36	10.45	parket
2	dnevni boravak	24.90	21.90	parket
3	toalet	1.65	5.33	keramika
4	kupatilo	4.79	10.95	keramika
5	spavaća soba	12.44	15.09	parket
6	dečja soba	7.94	11.29	parket
7	degažman			parket
P neto		57.08		
P neto-3%		55.37		
8	terase	3.41		granitna keramika
P NETO UKUPNO		58.78		