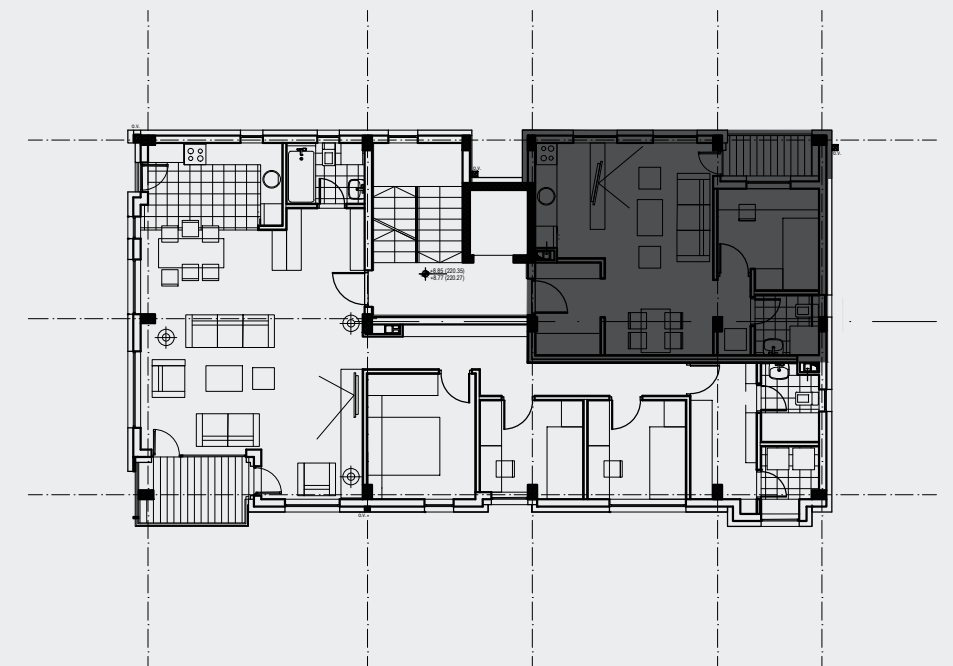


Osnova stana R=1:50



STAN S9 **P=41.86m²**
jednoiposoban, zapadne i severne orijentacija
III sprat

oz.	namena	P(m ²)	O(m)	podna obloga
1	ulaz	4.12	8.55	parket
2	dnevni boravak	23.97	21.50	parket
3	kuhinja	-	-	keramika
4	toalet/kupatilo	-	-	keramika
5	kupatilo	2.89	7.26	keramika
6	spavaća soba	-	-	parket
7	dečja soba	7.34	11.43	parket
8	dečja soba	-	-	parket
9	degažman	2.01	6.62	parket
10	perionica	-	-	keramika
11	garderoba	-	-	parket
P neto		40.33		
P neto-3%		39.12		
12	terasa	2.74		keramika
P neto ukupno		41.86		