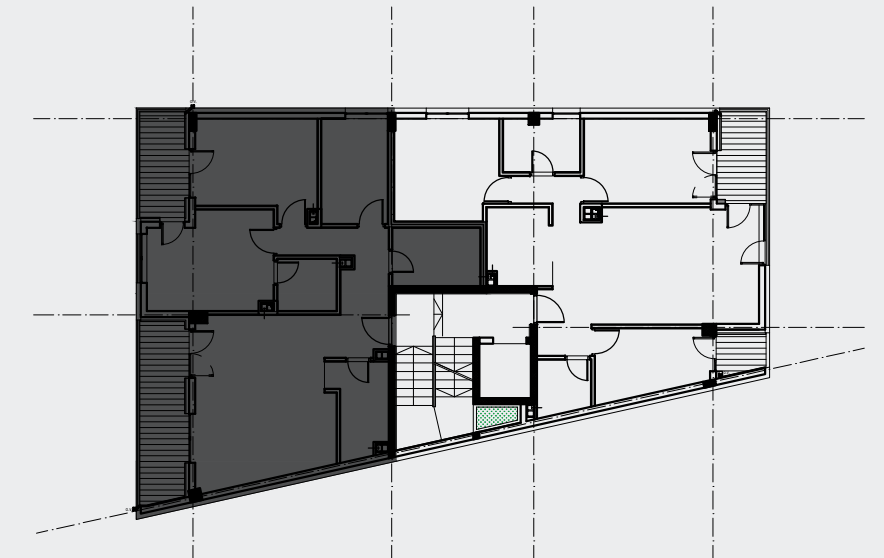
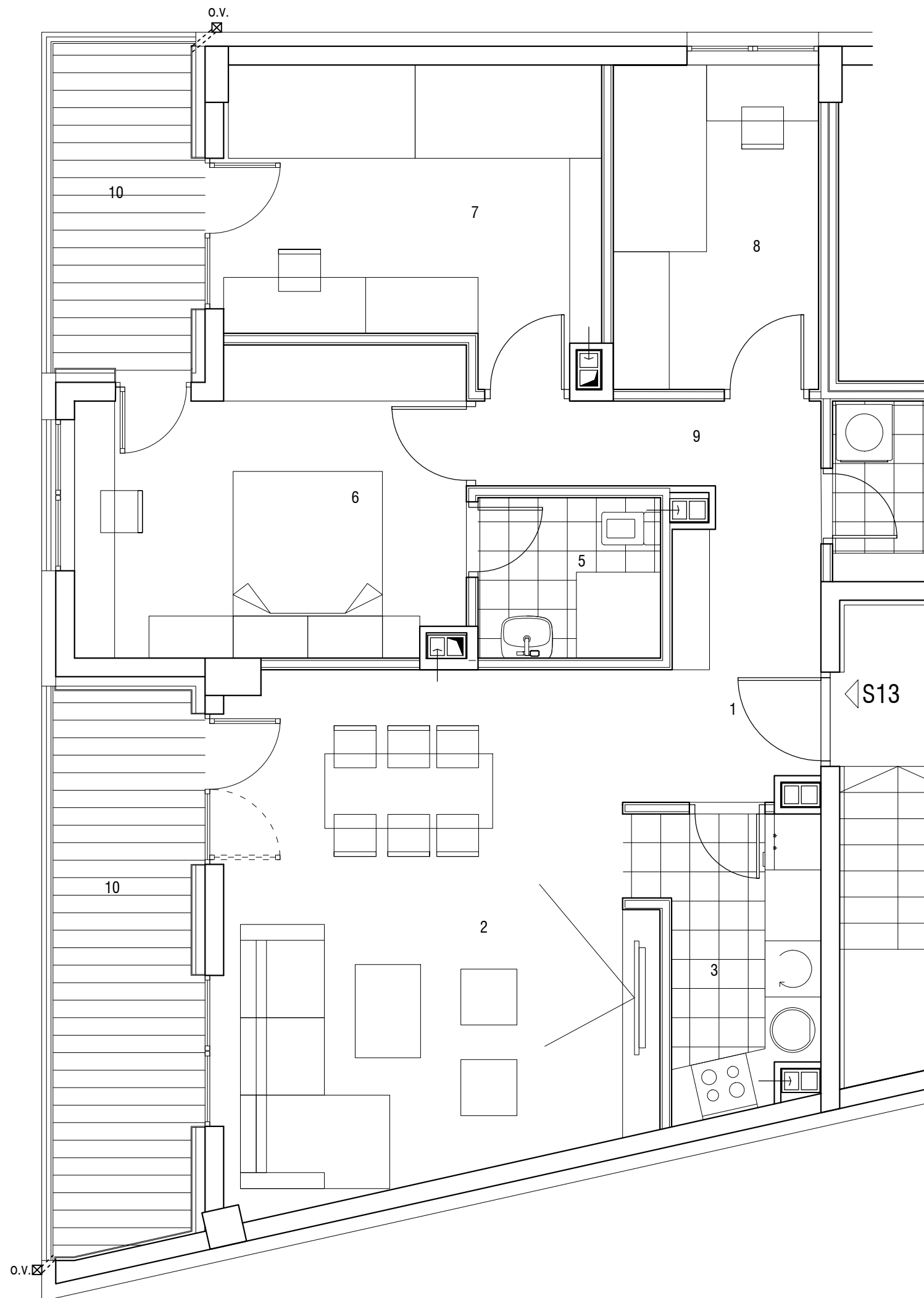


Pozicija stana u zgradi
IV sprat STAN S13



STAN S13

P=94.64m²

troiposoban, severozapadna i severoistočna orijentacija
IV sprat S13

oz.	namena	P(m ²)	O(m')	podna obloga
1	ulaz	2.87	7.09	parket
2	dnevni boravak	24.30	20.32	parket
3	kuhinja	5.35	10.74	ker. pločice
4	kupatilo 1	5.62	9.68	ker. pločice
5	kupatilo 2	3.36	7.35	ker. pločice
6	spavaća soba	12.96	15.11	parket
7	dečja soba	12.25	15.05	parket
8	dečja soba	7.65	11.35	parket
9	degažman	6.27	14.04	parket
P neto		80.63		
10	terasa	5.15+8.86		granitna keramika
P NETO UKUPNO		94.64		